

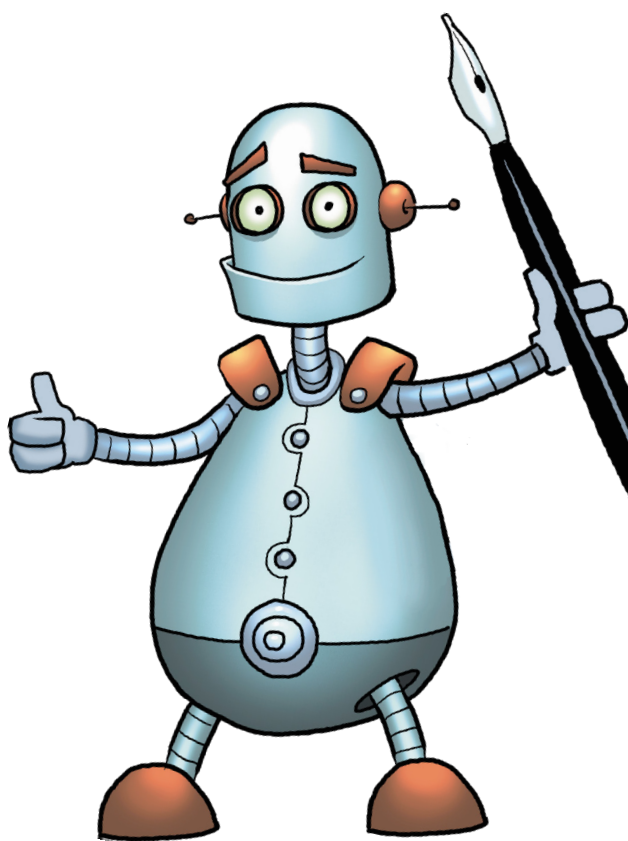


LEARNING LADDERS

WRITING



ST LUKES C OF E
PRIMARY SCHOOL



NAME

CLASS

CONTENTS

Ladder Title	Page
Super Spelling Target	1
Organised Targets	4
Purposeful Targets	6
Word Wonder Targets	9
Grammar Giant Targets	11
Handwriting Hero Targets	14

WRITING LADDER

SUPER SPELLING TARGET

Can I spell the next 22 sets of homophones/near homophones? (e.g. accept/except).

Rung 11 COMPLETE COMPLETE COMPLETE

Can I can add suffixes to spell longer words? (e.g. -ment, -ful, -less, -ly).

Rung 10 COMPLETE COMPLETE COMPLETE

Can I spell the first 11 sets of homophones/near homophones? (e.g. there/their/they're).

Rung 9 COMPLETE COMPLETE COMPLETE

Can I spell most of the common exception words?

Rung 8 COMPLETE COMPLETE COMPLETE

Can I spell 10 words with contractions? (e.g. it's, can't, won't, they're etc.)

Rung 7 COMPLETE COMPLETE COMPLETE

Can I use the possessive apostrophe for a singular person? (e.g. the girl's book).

Rung 6 COMPLETE COMPLETE COMPLETE

Can I add the suffixes -ed, -ing, -er, -est, -ly, -y to root words?

Rung 5 COMPLETE COMPLETE COMPLETE

Can I use the prefix un-?

Rung 4 COMPLETE COMPLETE COMPLETE

Can I spell the days of the week?

Rung 3 COMPLETE COMPLETE COMPLETE

Can I spell most of the 100 high frequency words?

Rung 2 COMPLETE COMPLETE COMPLETE

WRITING LADDER

SUPER SPELLING TARGET

Can I spell all of the Year 5&6 word list?

Rung 21

COMPLETE

COMPLETE

COMPLETE

Can I show that I know and use the 'I before E' rule following a C?

Rung 20

COMPLETE

COMPLETE

COMPLETE

Can I spell words with the endings -cious and -tious?

Rung 19

COMPLETE

COMPLETE

COMPLETE

Can I spell words with silent letters?

Rung 18

COMPLETE

COMPLETE

COMPLETE

Can I use the suffixes -ly, -ation, -ous?

Rung 17

COMPLETE

COMPLETE

COMPLETE

Can I use the prefixes il-, ir-, re-, sub-, inter-, anti-, auto-?

Rung 16

COMPLETE

COMPLETE

COMPLETE

Can I use the possessive apostrophe correctly in all situations?

Rung 15

COMPLETE

COMPLETE

COMPLETE

Can I spell all of the Year 3&4 word list?

Rung 14

COMPLETE

COMPLETE

COMPLETE

Can I spell words ending in -tion/-sion/-cian/-ssion?

Rung 13

COMPLETE

COMPLETE

COMPLETE

Can I use the prefixes dis-, mis-, in- and im-?

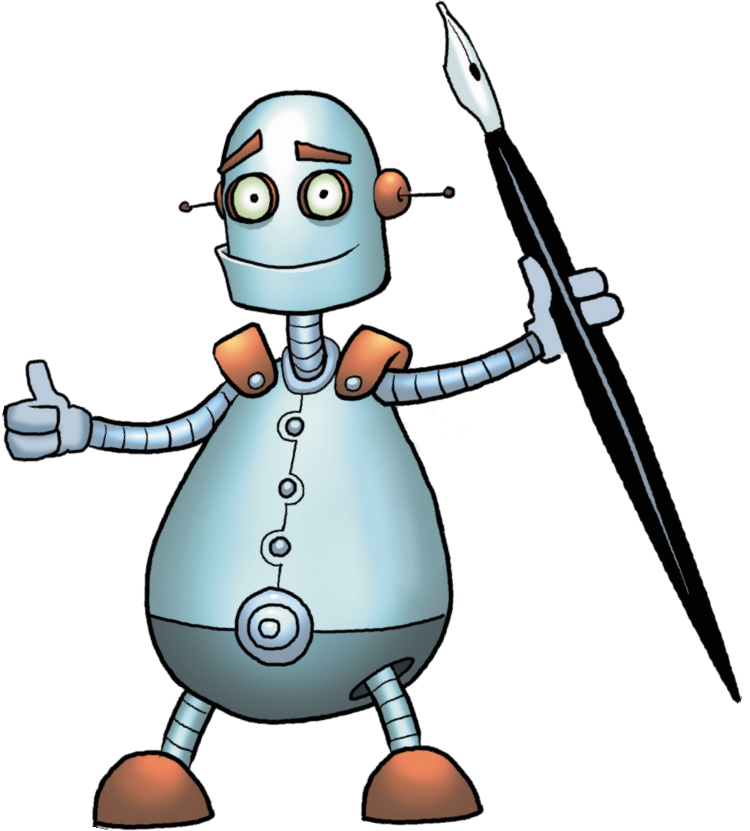
Rung 12

COMPLETE

COMPLETE

COMPLETE

SUPER SPELLING TARGET



Can I spell subject specific words correctly?

Rung 26	COMPLETE	COMPLETE	COMPLETE	
---------	----------	----------	----------	--

Can I show that I am secure with most complex words and all homophones?

Rung 25	COMPLETE	COMPLETE	COMPLETE	
---------	----------	----------	----------	--

Can I spell words with the endings -cial and -tial?

Rung 24	COMPLETE	COMPLETE	COMPLETE	
---------	----------	----------	----------	--

Can I spell words with the endings -ance and -ence?

Rung 23	COMPLETE	COMPLETE	COMPLETE	
---------	----------	----------	----------	--

Can I spell words with the endings -ible and -able?

Rung 22	COMPLETE	COMPLETE	COMPLETE	
---------	----------	----------	----------	--

WRITING LADDER

ORGANISED TARGETS

Can I use paragraphs for a change in action, setting and time in narrative writing?

Rung 10

COMPLETE

COMPLETE

COMPLETE

Can I use paragraphing, in narrative writing, for a new location in a story?

Rung 9

COMPLETE

COMPLETE

COMPLETE

Can I group similar information together in paragraphs in non-fiction writing?

Rung 8

COMPLETE

COMPLETE

COMPLETE

Can I use simple connectives to link ideas logically? (e.g. also, as well, because, but).

Rung 7

COMPLETE

COMPLETE

COMPLETE

Can I use connectives that signal time, e.g. than, after, before?

Rung 6

COMPLETE

COMPLETE

COMPLETE

Can I organise my writing to reflect the purpose? (e.g. a newspaper report has a headline, a by-line, an introduction and then a chronological recount of events).

Rung 5

COMPLETE

COMPLETE

COMPLETE

Can I begin to use an appropriate opening and ending?

Rung 4

COMPLETE

COMPLETE

COMPLETE

Can my writing can be read without any help?

Rung 3

COMPLETE

COMPLETE

COMPLETE

Can I write more than one sentence about an idea?

Rung 2

COMPLETE

COMPLETE

COMPLETE

Can I use a simple structure in my writing? (e.g. beginning, middle and end, or instructions written in the correct order).

Rung 1

COMPLETE

COMPLETE

COMPLETE

WRITING LADDER

ORGANISED TARGETS

Can I demonstrate a range of techniques to signal overall direction of the text for the reader?

Rung 20 COMPLETE COMPLETE COMPLETE

Can I begin to vary structure and length of paragraphs for effect on the reader?

Rung 19 COMPLETE COMPLETE COMPLETE

Can I use references, in narrative writing, to the start of the story to signal a change at the end of the story?

Rung 18 COMPLETE COMPLETE COMPLETE

Can I make links between paragraphs in non-fiction writing? (e.g. 'As mentioned previously').

Rung 17 COMPLETE COMPLETE COMPLETE

Can I have an introductory sentence to my paragraphs in non-fiction writing, followed by approximately 3 points? (Each of these points may involve 2 or more sentences, the use of examples and connectives to guide the reader).

Rung 16 COMPLETE COMPLETE COMPLETE

Can I use shifts in time and place to shape a story and guide the reader through the text? (e.g. by introducing a new section to draw attention to the main event).

Rung 15 COMPLETE COMPLETE COMPLETE

Can I control my paragraph structure to shape a story? (e.g. 5 paragraph structure involving a build-up, conflict and resolution).

Rung 14 COMPLETE COMPLETE COMPLETE

Can I use connectives, within a paragraph, to link the sentences? (e.g. secondly, in addition, furthermore).

Rung 13 COMPLETE COMPLETE COMPLETE

Can I use relevant openings to my paragraphs?

Rung 12 COMPLETE COMPLETE COMPLETE

Can I write a clear introduction, followed by logical points, drawing to a defined conclusion in non-fiction writing?

Rung 11 COMPLETE COMPLETE COMPLETE

WRITING LADDER

PURPOSEFUL TARGETS

Can I use some of the 'Tricks of the Trade' for a given style to ensure that the style of writing is evident?

Rung 10 COMPLETE COMPLETE COMPLETE

Can I consider the needs of the reader and provide background information in my writing?

Rung 9 COMPLETE COMPLETE COMPLETE

Can I give insights into character development in my writing through describing how characters look, react, talk or behave, rather than by telling the reader?

Rung 8 COMPLETE COMPLETE COMPLETE

Can I establish some evidence of viewpoint?

Rung 7 COMPLETE COMPLETE COMPLETE

Can I include details to add an element of humour, surprise or suspense?

Rung 6 COMPLETE COMPLETE COMPLETE

Can I think about the different styles needed for different types of writing?

Rung 5 COMPLETE COMPLETE COMPLETE

Can I begin to use appropriate language in different types of writing? (e.g. story language, non-fiction).

Rung 4 COMPLETE COMPLETE COMPLETE

Can show that I know who my writing is for (the intended audience)?

Rung 3 COMPLETE COMPLETE COMPLETE

Can I use appropriate word choices to provide basic information and ideas?

Rung 2 COMPLETE COMPLETE COMPLETE

Can I read my writing back to an adult confidently?

Rung 1 COMPLETE COMPLETE COMPLETE

WRITING LADDER

PURPOSEFUL TARGETS

Can I establish a convincing, individual voice or point of view and mostly sustain this?

Rung 20

COMPLETE

COMPLETE

COMPLETE

Can I construct paragraphs that support meaning and purpose?

Rung 19

COMPLETE

COMPLETE

COMPLETE

Can I show my writing is well constructed and shows a secure grasp of the chosen genre?

Rung 18

COMPLETE

COMPLETE

COMPLETE

Can I show that my writing is well paced?

Rung 17

COMPLETE

COMPLETE

COMPLETE

Can I use the setting and weather as a 'sympathetic background' to the characters' situation? (e.g. thunderstorm for the dangerous parts with the sun coming out when all is well).

Rung 16

COMPLETE

COMPLETE

COMPLETE

Can I address the reader?

Rung 15

COMPLETE

COMPLETE

COMPLETE

Can I write in a given style successfully?

Rung 14

COMPLETE

COMPLETE

COMPLETE

Can I use the setting to create mood in my writing?

Rung 13

COMPLETE

COMPLETE

COMPLETE

Can I show characterisation in my writing through direct and reported speech?

Rung 12

COMPLETE

COMPLETE

COMPLETE

Can I develop characters by including significant interaction between them? (e.g. through action, description and characters' responses).

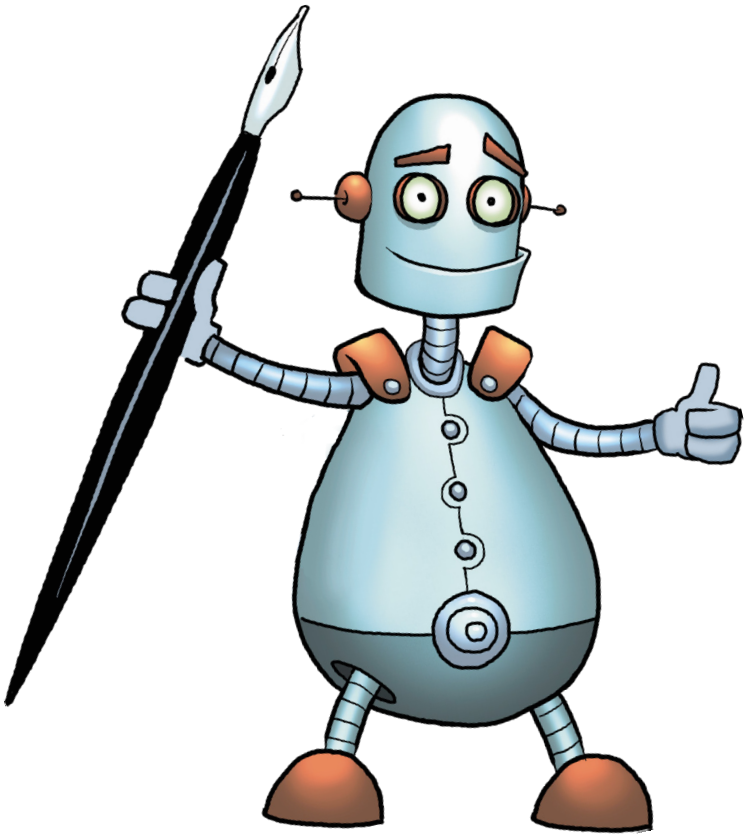
Rung 11

COMPLETE

COMPLETE

COMPLETE

PURPOSEFUL TARGETS



Can I use controlling techniques for a specific purpose, sustained throughout a piece of text?

Rung 21

COMPLETE

COMPLETE

COMPLETE

WORD WONDER TARGETS

Can I include details to add interest, to persuade or to direct?

Rung 10	COMPLETE	COMPLETE	COMPLETE	
---------	----------	----------	----------	--

Can I choose words and phrases that both engage the reader and support the purpose? (e.g. these may still be 'well-known' to the writer from other text examples, or class lists, etc).

Rung 9	COMPLETE	COMPLETE	COMPLETE	
--------	----------	----------	----------	--

Can I use appropriate and interesting vocabulary?

Rung 8	COMPLETE	COMPLETE	COMPLETE	
--------	----------	----------	----------	--

Can I describe nouns by one or more precise adjectives (e.g. a loud wailing sound).

Rung 7	COMPLETE	COMPLETE	COMPLETE	
--------	----------	----------	----------	--

Can I use detail to clarify information?

Rung 6	COMPLETE	COMPLETE	COMPLETE	
--------	----------	----------	----------	--

Can I show evidence of using simple similes? (e.g. it was as yellow as the sun).

Rung 5	COMPLETE	COMPLETE	COMPLETE	
--------	----------	----------	----------	--

Can I use interesting adverbs to describe actions?

Rung 4	COMPLETE	COMPLETE	COMPLETE	
--------	----------	----------	----------	--

Can I use interesting adjectives to describe people, objects and settings?

Rung 3	COMPLETE	COMPLETE	COMPLETE	
--------	----------	----------	----------	--

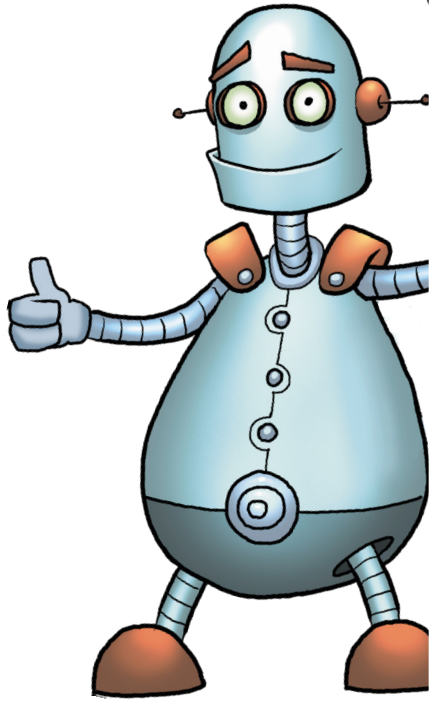
Can I make appropriate word choices from word banks, class lists and sentence openers?

Rung 2	COMPLETE	COMPLETE	COMPLETE	
--------	----------	----------	----------	--

Can I use simple descriptive language? (e.g. colour, size, feelings).

Rung 1	COMPLETE	COMPLETE	COMPLETE	
--------	----------	----------	----------	--

WORD WONDER TARGETS



Can I use word choices that are well-matched to purpose and audience?				
Rung 16	COMPLETE	COMPLETE	COMPLETE	
Can I recognise how changing the word choice can change the meaning of the writing?				
Rung 15	COMPLETE	COMPLETE	COMPLETE	
Can I use vocabulary that is varied, imaginative and appropriate, including use of technical and specific words?				
Rung 14	COMPLETE	COMPLETE	COMPLETE	
Can I make assertive use of the characteristic language and of the chosen text type?				
Rung 13	COMPLETE	COMPLETE	COMPLETE	
Can I ensure my vocabulary choices are more thoughtful - using a thesaurus to extend the range of words I use?				
Rung 12	COMPLETE	COMPLETE	COMPLETE	
Can I choose words for deliberate effect? (e.g. stationary rather than stopped).				
Rung 11	COMPLETE	COMPLETE	COMPLETE	

GRAMMAR GIANTS TARGETS

Can I use commas after fronted adverbials?

Rung 10	COMPLETE	COMPLETE	COMPLETE	
---------	----------	----------	----------	--

Can I proof read for errors?

Rung 9	COMPLETE	COMPLETE	COMPLETE	
--------	----------	----------	----------	--

Can I write in complex sentences to clarify relationships in time and place? (e.g. meanwhile, during, while, until and following).

Rung 8	COMPLETE	COMPLETE	COMPLETE	
--------	----------	----------	----------	--

Can I use a wider range of conjunctions? (e.g. when, if, because, although and however).

Rung 7	COMPLETE	COMPLETE	COMPLETE	
--------	----------	----------	----------	--

Can I use the present and past tenses correctly?

Rung 6	COMPLETE	COMPLETE	COMPLETE	
--------	----------	----------	----------	--

Can I use apostrophes for contractions (e.g. didn't) and singular possession (e.g. the girl's book)?

Rung 5	COMPLETE	COMPLETE	COMPLETE	
--------	----------	----------	----------	--

Can I use full stops, capital letters, exclamation marks, question marks and commas for lists?

Rung 4	COMPLETE	COMPLETE	COMPLETE	
--------	----------	----------	----------	--

Can I begin to punctuate sentences, using a capital letter and a full stop, question mark or exclamation marks?

Rung 3	COMPLETE	COMPLETE	COMPLETE	
--------	----------	----------	----------	--

Can I join words and joining clauses using 'and'?

Rung 2	COMPLETE	COMPLETE	COMPLETE	
--------	----------	----------	----------	--

Can I use capital letters for names of people, places, the days of the week and the personal pronoun 'I'?

Rung 1	COMPLETE	COMPLETE	COMPLETE	
--------	----------	----------	----------	--

GRAMMAR GIANTS TARGETS

Can I use semi-colons, colons or dashes to mark boundaries between independent clauses?

Rung 20	COMPLETE	COMPLETE	COMPLETE	
---------	----------	----------	----------	--

Can I recognise vocabulary and structures that are appropriate for formal speech and writing?

Rung 19	COMPLETE	COMPLETE	COMPLETE	
---------	----------	----------	----------	--

Can I use passive verbs to affect the presentation of information in a sentence?

Rung 18	COMPLETE	COMPLETE	COMPLETE	
---------	----------	----------	----------	--

Can I use brackets, dashes or commas to indicate parenthesis?

Rung 17	COMPLETE	COMPLETE	COMPLETE	
---------	----------	----------	----------	--

Can I use relative clauses beginning with: who, which, where, when, whose and that?

Rung 16	COMPLETE	COMPLETE	COMPLETE	
---------	----------	----------	----------	--

Can I use a colon to introduce a list?

Rung 15	COMPLETE	COMPLETE	COMPLETE	
---------	----------	----------	----------	--

Can I proof read for spelling and punctuation errors?

Rung 14	COMPLETE	COMPLETE	COMPLETE	
---------	----------	----------	----------	--

Can I ensure the consistent and correct use of tense throughout a piece of writing?

Rung 13	COMPLETE	COMPLETE	COMPLETE	
---------	----------	----------	----------	--

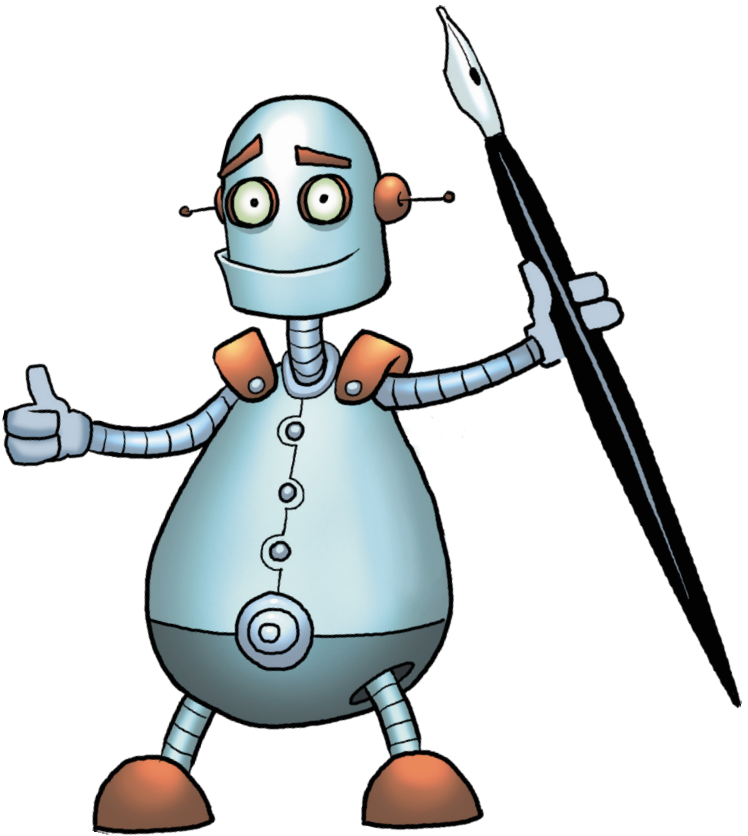
Can I write in standard English forms for verb inflections? (e.g. 'we were' instead of 'we was').

Rung 12	COMPLETE	COMPLETE	COMPLETE	
---------	----------	----------	----------	--

Can I use and punctuate direct speech?

Rung 11	COMPLETE	COMPLETE	COMPLETE	
---------	----------	----------	----------	--

GRAMMAR GIANTS TARGETS



Can I consistently use a full range of accurate punctuation in a variety of sentence structures?

Rung 21

COMPLETE

COMPLETE

COMPLETE

WRITING LADDER

HANDWRITING HERO TARGETS

Can I consistently use diagonal and horizontal strokes needed to join letters?

Rung 10

COMPLETE

COMPLETE

COMPLETE

Can I use spacing between words that reflects the size of the letters?

Rung 9

COMPLETE

COMPLETE

COMPLETE

Can I write capital and lower case letters of the correct size, orientation and relationship to one another?

Rung 8

COMPLETE

COMPLETE

COMPLETE

Can I understand that upper case letters should not be joined to lower case letters?

Rung 7

COMPLETE

COMPLETE

COMPLETE

Can I use diagonal and horizontal strokes needed to join letters in my writing?

Rung 6

COMPLETE

COMPLETE

COMPLETE

Can I form lower case letters of the correct size, relative to one another?

Rung 5

COMPLETE

COMPLETE

COMPLETE

Can I form digits 0-9?

Rung 4

COMPLETE

COMPLETE

COMPLETE

Can I form capital letters?

Rung 3

COMPLETE

COMPLETE

COMPLETE

Can I begin to form lower-case letters in the correct direction, starting and finishing in the right place?

Rung 2

COMPLETE

COMPLETE

COMPLETE

Can I sit correctly at a table, holding a pencil comfortably and correctly?

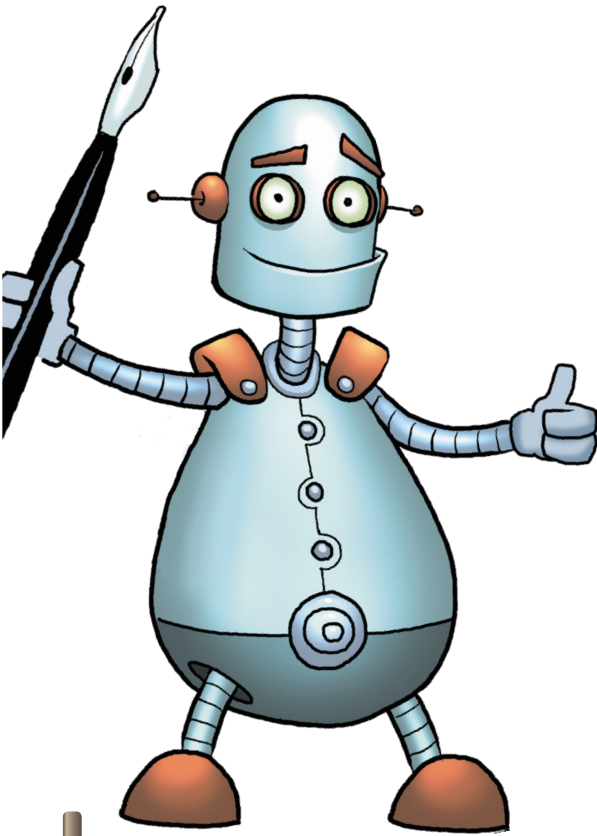
Rung 1

COMPLETE

COMPLETE

COMPLETE

HANDWRITING HERO TARGETS



Can I choose the writing implement that is best suited for a task?

Rung 14	COMPLETE	COMPLETE	COMPLETE	
---------	----------	----------	----------	--

Can I choose which shape of a letter to use when given choices and decide whether or not to join letters to create effect?

Rung 13	COMPLETE	COMPLETE	COMPLETE	
---------	----------	----------	----------	--

Can I ensure that my handwriting is consistently of a high quality and legible?

Rung 12	COMPLETE	COMPLETE	COMPLETE	
---------	----------	----------	----------	--

Can I use the diagonal and horizontal strokes that are needed to join letters with increasing accuracy?

Rung 11	COMPLETE	COMPLETE	COMPLETE	
---------	----------	----------	----------	--



LEARNING LADDERS

WWW.LEARNINGLADDERS.INFO

Copyright © 2015 Learning Ladders Education.
All rights reserved.

The 'Learning Ladders' logo, device and characters are
Trademarks of Learning Ladders Education Ltd.

Booklets are licensed for internal use by St Lukes
C of E Primary School.

For further information visit www.learningladders.info.