



ST. LUKE'S CHURCH OF ENGLAND PRIMARY SCHOOL Newsletter

Friday 14th February 2025

Week Commencing Monday 24th February 2025

Monday	School Re-Opens Woodwind Lessons Orchestra Club
Tuesday	Violin/Guitar Lessons
Wednesday	Voice/Percussion Lessons Year 3 Swimming
Thursday	Piano/Keyboard/Brass Lessons Sublime Science Workshop 3.15pm
Friday	Normal School Day



Snack and Milk Payment



If you would like your child to receive snack and/or milk at break time this must be ordered/paid for on School Hub by 9.00am on Tuesday 25th February 2025.



If your order/payment is not received by this time it will not be possible for us to continue providing your child with snack or milk from Wednesday 26th February, as we will only have the stock for the orders we receive from you.

If you make a late order/payment please inform the school office as soon as possible so that we can increase our order to our suppliers. Please also contact the school office if you are experiencing any difficulty in doing this .

Thank you for your continued cooperation, understanding and support.

Pet Dogs



Could we politely remind parents and carers that pet dogs are not allowed on the *school grounds or cycle path* for health and safety reasons.

We also request that they are not tied to the school fences adjacent to the entry gates as we have a number of children in school who are scared of dogs.

As a school we appreciate that parents will want to walk their dogs on the way to school in the morning and afternoon and therefore we appreciate your cooperation in remaining on the public footpath with them.

Thank you.

Music Fees February/April 2025

Music fees for the next half term are now available to pay on School Hub.

Please note that music fees must be paid in advance.

If your child misses a lesson due to teacher absence or a school organised event these lessons will be made up by the music teacher.

Lessons missed due to children taking time off school for family holidays or illness must still be paid for.

Thank you for your continued support and cooperation.



Pease could we request that children do not bring their own toys and teddy bears into school. If children bring their own toys to school these will be looked after by their class teacher and returned to them at the end of the day. School cannot be held responsible for loss or damage of any toys brought into school.

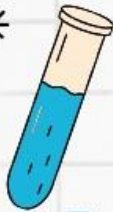
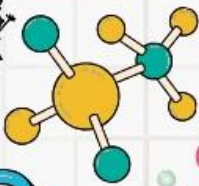
We have a number of soft toys, dolls, figures and outdoor play equipment for the children to use at lunchtime.

If you have any small soft toys, dolls, cars or figures in good condition that you no longer need please would you donate these to the school office for the children to play with during lunchtime. Thank you.





FRIENDS OF
ST. LUKE'S
Registered Charity 1022101



3.30pm - 5.00pm

WORKSHOP



Thursday 27th February

Spectacular Science Experiments &
Hands-on Activities, including:

- 'Magic' Tricks and Spectacular Experiments
- Spectacular Science - Bubbles, Smoke & Flying things
- Goopy Slime Making



Just £8.00 per child (including a snack bag).

Please Note: ALL children must be collected by a responsible adult.
If your child attends After School Club, the fee will still be payable.

Look out for the consent form coming soon!

If you would like your child to attend this fantastic workshop please complete the slip sent home with the children today and return it to school by Tuesday 25th February.

Thank you.

Friends of St Luke's School Lottery

The Friends of St Luke's have launched a lottery to raise funds for school.

Please use the link below to find out more about how to play.

Good luck.

https://www.yourschoollottery.co.uk/lottery/school/lowton-st-lukes-cofe-primary-school?utm_campaign=cause-page-social-share&utm_source=whatsapp&utm_medium=social&utm_content=Hyperlink&fbclid=IwY2xjawH15GhleHRuA2FlbQIxMQABHT8AlesO8C9d7rJmhw7v7jzy79Rpqn1PVluSgLS5S377_0U6fvUesjwXCA_aem_MUkoz7obvgbP1hacucnt8g





Half Term Activities for Children and Families

Please follow this link for half term activities

[https://
www.saintlukes.wigan.sch.uk/
serve_file/34138934](https://www.saintlukes.wigan.sch.uk/serve_file/34138934)



Dates For Your Diary

Monday 24th February — School re-opens

Thursday 27th February — Friends of St Luke's After School Sublime Science Workshop (further details to follow). This is being held as an exciting alternative event to Film Night

Wednesday 5th — Friday 7th March — Year 6 residential trip to the Anderton Centre

Thursday 6th March — World Book Day (please come to school dressed in character costumes or sensible, weather appropriate non-uniform)

Tuesday 11th March — Friends of St Luke's meeting 6.00pm in school

Wednesday 12th March — Year 6 at Church

W/C Monday 24th March — Courageous Advocacy Week

Tuesday 25th March — Whole school to Church

Tuesday 25th March — Parents afternoon/evening

Wednesday 26th March — Parents evening

Thursday 10th April — Easter Bingo

Friday 11th April — Break up for the Easter Holidays at 3.15pm

Wednesday 23rd April — School re-opens



St Luke's Church



Lowton and Golborne Food Bank

St Luke's Church collect food items weekly for the food bank run by All Saints Church in Golborne. All the items collected are distributed to those who are in need within the Lowton and Golborne area.



If you would like to contribute towards the Food Bank, items can be brought to St Luke's Church before or after the services on Wednesday or Sunday morning (services run from 10.00am until approximately 11.00am) or be taken to St Luke's Church Thursday Coffee Morning. Thank you.

Coffee Morning



Every Thursday St Luke's Church Fellowship Room (access on Slag Lane opposite Lowton West School), is open during the morning school run from 8.45am until 10.00am for tea, coffee and a chat.



Forget-Me-Not Café



The café has relocated to Broadmead on Golborne Road where there should be adequate on site car parking spaces for everyone.



St Luke's Church Services

Church services take place at 10.00am on Wednesday and Sunday — everybody welcome.



Refreshments will be served after the services in the Fellowship Room.

Vestry Service

Weddings and Baptisms can be booked every Tuesday evening between 7.00pm and 8.00pm in St Luke's Church Fellowship Room (access on Slag Lane).

