



ST. LUKE'S CHURCH OF ENGLAND PRIMARY SCHOOL Newsletter

Friday 7th February 2025

Week Commencing Monday 10th February 2025

Monday	Woodwind Lessons Orchestra Club Anderton Centre Residential Meeting for Year 6 Parents 6.00pm in Year 6 Classroom
Tuesday	Violin/Guitar Lessons
Wednesday	Voice/Percussion Lessons Year 3 Swimming
Thursday	Piano/Keyboard/Brass Lessons
Friday	Normal School Day School Closes for Half Term 3.15pm (After School Club Open As Usual)



Pease could we request that children do not bring their own toys and teddy bears into school. If children bring their own toys to school these will be looked after by their class teacher and returned to them at the end of the day. School cannot be held responsible for loss or damage of any toys brought into school.

We have a number of soft toys, dolls, figures and outdoor play equipment for the children to use at lunchtime.

If you have any small soft toys, dolls, cars or figures in good condition that you no longer need please would you donate these to the school office for the children to play with during lunchtime. Thank you.





Pet Dogs

Could we politely remind parents and carers that pet dogs are not allowed on the *school grounds or cycle path* for health and safety reasons.

We also request that they are not tied to the school fences adjacent to the entry gates as we have a number of children in school who are scared of dogs.

As a school we appreciate that parents will want to walk their dogs on the way to school in the morning and afternoon and therefore we appreciate your cooperation in remaining on the public footpath with them.

Thank you.

Second Hand Book Sale

The School Council have been thinking of ways to raise money to buy new iPads, dictionaries and thesauruses.

This year they have decided to hold a second hand book stall in school, around the time of World Book day.

If you have any good quality children's books that you no longer need please could these be brought into school by Friday 14th February.

Thank you.



Parent Governor Vacancy

A letter was sent out yesterday asking for nominations for a new Parent Governor.

If you would like to be considered for this valuable and rewarding position please return your nomination to school by 12 noon on Monday 10th February 2025.

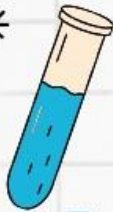
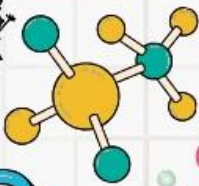
Please follow this link to view the Parent Governor Vacancy letter

https://www.saintlukes.wigan.sch.uk/serve_file/33611509





FRIENDS OF
ST. LUKE'S
Registered Charity 1022101



3.30pm - 5.00pm

WORKSHOP



Thursday 27th February

Spectacular Science Experiments &
Hands-on Activities, including:

- 'Magic' Tricks and Spectacular Experiments
- Spectacular Science - Bubbles, Smoke & Flying things
- Gooney Slime Making



Just £8.00 per child (including a snack bag).

Please Note: ALL children must be collected by a responsible adult.
If your child attends After School Club, the fee will still be payable.

Look out for the consent form coming soon!

If you would like your child to attend this fantastic workshop please complete the slip sent home with the children today and return it to school by Tuesday 25th February.

Thank you.

Friends of St Luke's School Lottery

The Friends of St Luke's have launched a lottery to raise funds for school.

Please use the link below to find out more about how to play.

Good luck.

https://www.yourschoollottery.co.uk/lottery/school/lowton-st-lukes-cofe-primary-school?utm_campaign=cause-page-social-share&utm_source=whatsapp&utm_medium=social&utm_content=Hyperlink&fbclid=IwY2xjawH15GhleHRuA2FlbQIxMQABHT8AlesO8C9d7rJmhw7v7jzy79Rpqn1PVluSgLS5S377_0U6fvUesjwXCA_aem_MUkoz7obvgbP1hacucnt8g



Dates For Your Diary

Monday 10th February — Anderton Centre meeting for Year 6 parents at 6.00pm in the Year 6 classroom

Friday 14th February — Break up for half term at 3.15pm

Monday 24th February — School re-opens

Thursday 27th February — Friends of St Luke's After School Sublime Science Workshop (further details to follow). This is being held as an exciting alternative event to Film Night

Wednesday 5th — Friday 7th March — Year 6 residential trip to the Anderton Centre

Thursday 6th March — World Book Day (please come to school dressed in character costumes or sensible, weather appropriate non-uniform)

Tuesday 11th March — Friends of St Luke's meeting 6.00pm in school

Wednesday 12th March — Year 6 at Church

W/C Monday 24th March — Courageous Advocacy Week

Tuesday 25th March — Whole school to Church

Tuesday 25th March — Parents afternoon/evening

Wednesday 26th March — Parents evening

Thursday 10th April — Easter Bingo

Friday 11th April — Break up for the Easter Holidays at 3.15pm

Wednesday 23rd April — School re-opens





FRIENDS OF
ST. LUKE'S
Registered Charity 1022101



Challenge 2025!

The Challenge

Help us with our fundraising by raising ANY amount including 2025 (£20.25, £2.25, 25p...)

HOWEVER you wish by the end of term



Sponsor Forms coming soon!

Please return all cash donations to school in a labelled envelope by Friday 14th February 2025.

Donations can also be made by either PayPal or Bank Transfer (please include child's name and year group as a reference).

If you would prefer, we have set up a JustGiving page to collect sponsor money instead.

<https://www.justgiving.com/page/friends-of-st-lukes-pta-challenge2025>



- Hold a bake sale
- Readathon
- Wash cars
- Help out at home
- Sponsored silence, run or walk
- Surprise us with your own ideas!

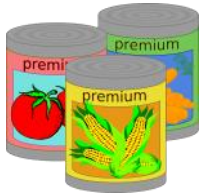


St Luke's Church



Lowton and Golborne Food Bank

St Luke's Church collect food items weekly for the food bank run by All Saints Church in Golborne. All the items collected are distributed to those who are in need within the Lowton and Golborne area.



If you would like to contribute towards the Food Bank, items can be brought to St Luke's Church before or after the services on Wednesday or Sunday morning (services run from 10.00am until approximately 11.00am) or be taken to St Luke's Church Thursday Coffee Morning. Thank you.

Coffee Morning



Every Thursday St Luke's Church Fellowship Room (access on Slag Lane opposite Lowton West School), is open during the morning school run from 8.45am until 10.00am for tea, coffee and a chat.



Forget-Me-Not Café



The café has relocated to Broadmead on Golborne Road where there should be adequate on site car parking spaces for everyone.



St Luke's Church Services

Church services take place at 10.00am on Wednesday and Sunday — everybody welcome.

Refreshments will be served after the services in the Fellowship Room.



Vestry Service

Weddings and Baptisms can be booked every Tuesday evening between 7.00pm and 8.00pm in St Luke's Church Fellowship Room (access on Slag Lane).

