



ST. LUKE'S CHURCH OF ENGLAND PRIMARY SCHOOL Newsletter

Friday 1st November 2024

Week Commencing Monday 4th November 2024

Monday	Woodwind Lessons Whole School Watching an M&M Production of Snow White
Tuesday	Violin/Guitar/Voice Lessons Prospective Parents Visit 1.30pm Year 4 Wider Opportunities Brass Lessons
Wednesday	Percussion Lessons Year 1 and Year 5 at Church Year 3 Swimming
Thursday	Piano/Keyboard/Brass Lessons School Discos
Friday	Normal School Day



School Discos

The school discos will take place on Thursday 7th November in school. The infant disco will start at 6.00pm and finish at 7.00pm and the junior disco will start at 7.15pm and finish at 8.15pm.



Please drop children off at the main entrance and collect them from the hall doors in the infant playground. All children must be collected by an adult.

IMPORTANT— Reception 2025 Applications

The application window for Reception 2025 places is now open and closes on Wednesday 15th January 2025. If you have a child due to start school in September 2025, please follow this link to make your application to Wigan Council: <https://www.wigan.gov.uk/Resident/Education/Schools/School-Admissions/Primary-schools.aspx>

Applications must be made by Wednesday 15th January 2025.

As well as completing the online form, applicants are also required to complete and submit our 2025 supplementary information forms and provide original copies of the documents requested in our admissions policy, which can be found by following this link: https://www.saintlukes.wigan.sch.uk/serve_file/15939206

****Please note: you must complete a Supplementary Information form and submit original documents for siblings, even if you already have a child attending school.**



Operation Christmas Child Shoe Boxes

Once again we are supporting this worthwhile charity.

Last week the children all heard about the good work that Samaritan's Purse do by delivering shoeboxes filled with gifts to children in need around the world.

There will be a shoebox in each classroom if parents would like to send in a small gift such as a ball, notebook or pens. Alternatively, families can follow the instructions on the Operation Christmas Child leaflet sent home with all the children yesterday and make up their own shoebox for a child.



Completed shoeboxes or small gifts for the class shoebox can be sent into school up to the 18th November.

Thank you for your continued support.

M & M Production of Snow White



On Monday 4th November M&M Productions will be staging a performance of Snow White to all the children in school.

We are all very excited and looking forward to this fabulous event.



Friends of St Luke's ASDA Fundraising

Between now and November, ASDA is offering 0.5% of your total spend to a school cash pot of your choice. This does not affect your personal cash pot so you will still continue to earn your cash rewards.



All you need to do is click on the link when you log into your ASDA App and assign St Luke's School using the postcode WA3 2PW.

To date we have raised £442.13 and thank you for your continued support, which is very much appreciated.



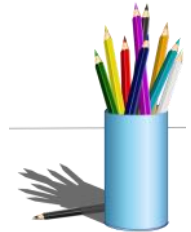
Statutory Tests 2025

This academic year the statutory test periods will be:

Year 1—week commencing 9th June 2025

Year 4—week commencing 9th June 2025

Year 6 — week commencing 12th May 2025



We kindly ask that you do not make appointments during the school day and avoid absences for your children during these periods. Thank you.

Prospective Parents Visits

Tuesday 5th November 1.30pm

Tuesday 12th November 1.30pm

Tuesday 19th November 10.45am

Tuesday 26th November 10.45am



Please telephone the school office on 01942 201140 to book on to a tour.

Annual Flu Vaccination



Intra Health will visit school on Thursday 21st November 2024 to administer the NHS National Flu Immunisation Schedule. Please follow this link for further information and to either give or decline consent for your child to receive the vaccination.

[You must give or decline consent for this vaccination by Monday 11th November.](https://nhslmms.azurewebsites.net/session/f44220f6)

<https://nhslmms.azurewebsites.net/session/f44220f6>

School Disco



FRIENDS OF
ST. LUKE'S
Registered Charity 1022101



Thursday
7th November 2024

Entry £2.50
(pay on the door)

Pocket money
treats

Tuck
shop

Infants:
6pm - 7pm
Juniors:
7:15pm - 8:15pm

Temporary
tattoos

Please drop children off at the main entrance and collect from the hall doors on the infant playground. Due to the timing of this event ALL children must be collected by an adult.

School Disco

Price List



FRIENDS OF
ST.LUKE'S
Registered Charity 1022101



Hotdog / Veggie Hotdog	£1.50
Cup drink	50p
Crisps / KitKat	50p
Swizzles / Haribo / Squashems	20p
Glow Sticks / Temporary Tattoos	20p
Finger Lights / Glow Bracelets	50p
Flower Garland	£1.00
Face Gems / Glow Glasses / Glow Hair Braid	£1.50
Inflatable Instruments	£2.00

Dates For Your Dairy

Wednesday 6th November — Year 1 & 5 to Church

Thursday 7th November — School Discos

Monday 11th November — Whole School to Church

Thursday 14th November — Reception Book Bag Blessing at Church

Friday 15th November — Non Uniform Day to Raise Funds for Children in Need

Wednesday 20th November — Year 4 to Church

**Monday 25th November — Snowman Salsa Sponsored Fundraiser
(further details to follow)**

Thursday 28th November — Christmas Fayre

Wednesday 4th December — Infant Nativity 10.00am in School

Thursday 5th December — Infant Nativity 1.45pm in School

Thursday 5th December — Infant Nativity 6.00pm in School

Tuesday 10th December — Junior Carol Service 2.00pm in School

**Tuesday 10th December — Junior Carol Service in St Luke's Church
6.30pm**

Wednesday 11th December — Junior Carol Service 10.00am in School

**Friday 13th December — Infant Christmas Parties (please come to school
in sensible, weather appropriate clothes and footwear)**

**Monday 16th December — Junior Christmas Parties (please come to
school dressed in sensible, weather appropriate clothes and footwear)**

Thursday 19th December — Christmas Worship 2.15pm

**Friday 20th December — St Luke's Has Got Talent and Christmas Raffle
Draw**

**Friday 20th December — End of Term 3.15pm (After School Club open as
usual)**

Tuesday 7th January — School Re-Opens to Pupils



St Luke's Church Notices November/December 2024



Sunday 3rd November — All Souls Memorial service 5.00pm in St Luke's Church. This is a special reflective service to remember those we love but no longer see. Everybody welcome.

Sunday 24th November — Christmas Lights Switch On, face painting, children's crafts, refreshments and a tombola will take place in St Luke's Church from 5.00pm. Donations of tombola prizes and cakes and biscuits for the refreshments would be gratefully appreciated.



Monday 2nd December — Mistletoe and all that Jingles Christmas Wreath Making and Refreshments 6.00 — 8.00pm in St Luke's Church. Tickets cost £8.00 and are available from Kath Pennington 01942 720947 or from the school office (cash only please).

Sunday 15th December — Carol Service 6.30pm in Church



Sunday 22nd December—All Age Worship 10.00am in Church

Tuesday 24th December — Family Crib Service 5.00pm in Church



Tuesday 24th December — Midnight Communion 11.30pm in Church

Wednesday 25th December — Family Communion 10.00am in Church



Sunday 29th December Team Service to celebrate the end of 2024 at 10.30am in St Thomas' Church WA3 3TH

St Luke's Church



Lowton and Golborne Food Bank

St Luke's Church collect food items weekly for the food bank run by All Saints Church in Golborne. All the items collected are distributed to those who are in need within the Lowton and Golborne area.



If you would like to contribute towards the Food Bank, items can be brought to St Luke's Church before or after the services on Wednesday or Sunday morning (services run from 10.00am until approximately 11.00am) or be taken to St Luke's Church Thursday Coffee Morning. Thank you.

Coffee Morning



Every Thursday St Luke's Church Fellowship Room (access on Slag Lane opposite Lowton West School), is open during the morning school run from 8.45am until 10.00am for tea, coffee and a chat.



Forget-Me-Not Café



The café has relocated to Broadmead on Golborne Road where there should be adequate on site car parking spaces for everyone.



St Luke's Church Services

Church services take place at 10.00am on Wednesday and Sunday — everybody welcome.



Refreshments will be served after the services in the Fellowship Room.

Vestry Service

Weddings and Baptisms can be booked every Tuesday evening between 7.00pm and 8.00pm in St Luke's Church Fellowship Room (access on Slag Lane).



LOWTON
Christmas *Tree Lights*
Switch on 2024

Sunday 24th November
5-7pm Switch on at 6:30

St Lukes Church, Church Lane, Lowton

- At The Rams Head
- Meet Santa
 - Festive outdoor bar
 - Games and Tombola
 - Hot food, drinks & Cakes

- In St Lukes Church
- Brass Band
 - Childrens crafts
 - Face painting
 - Tea, coffee and Cake

Visit Santas Grotto in The Rams Head



MISTLETOE AND ALL THAT JINGLES

AT
ST. LUKE'S CHURCH LOWTON

MONDAY 2ND DECEMBER 6 - 8PM

Come and learn how to make your own festive
Wreath and exquisite Christmas Bows.

Relax and ENJOY FESTIVE REFRESHMENTS
RAFFLE PRIZES available
plus GUESS THE WEIGHT OF THE CHRISTMAS
CAKE with the opportunity to win it!!!

Wreathes and bows will be available to purchase on the
night. Top raffle prize will be a wreath made by KELLY
on the night.

TICKETS £8.00

All Proceeds in aid of Church Community Mission and Ministry.
Contact Kath Pennington 01942 720947