



ST. LUKE'S CHURCH OF ENGLAND PRIMARY SCHOOL

Thursday 28th March 2024

Week Commencing Monday 8th April 2024

Monday	School Closed to Pupils	
Tuesday	School Re-Opens to Pupils Violin Lessons Due to unforeseen circumstances there will no Guitar Lessons this week — the lessons will be made up during the half term Year 4 Wider Opportunities Brass Lessons Choir Club 3.15 — 4.00pm	
Wednesday	Due to unforeseen circumstances there will no Percussion Lessons for the next two weeks — pupils will only be charged for 4 lessons	
Thursday	Brass Lessons Due to unforeseen circumstances there will no Piano/ Keyboard Lessons this week — the lessons will be made up during the half term	
Friday	Normal School day	

Easter Services at St Luke's Church

Maundy Thursday 28th March 7.30pm

Good Friday Walk of Witness begins at Lowton St Mary's at 10.30am

Easter Sunday Holy Communion at 10.00am

Sunday Club will restart after Easter on Sunday 14th April at 10.00am in St Luke's Church Fellowship room (please arrive via the main Church door).

Sunday Club will take place every second Sunday of the month in the Fellowship Room. Every fourth Sunday there will be a service especially for children and their families, followed by refreshments.





We would like to wish everyone a happy and peaceful Easter break and we look forward to seeing you back at school on Tuesday 9th April.



Family Easter Bingo



Thank you to everyone who joined us yesterday for Easter Bingo.

Great fun was had by everyone who attended and valuable and much needed funds have been raised for school which will benefit all of the children.



Orchestra Club



Orchestra club will restart for the summer term on Monday 15th April, this will be available to pay on School Hub.

Gardening Club

Gardening club will restart for the summer term on Tuesday 16th April.



Snack and Milk



Snack and milk are now available to pay on School Hub. Please ensure that this is paid for by 8.00am on Monday 15th April in order for your child to continue to receive it. If you pay after this date please contact the school office.

Music Tuition Fees

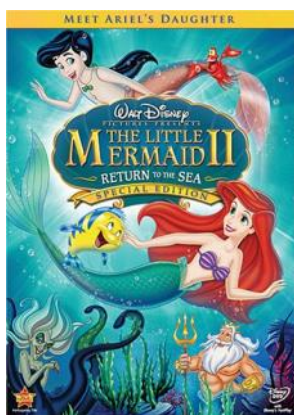
Music tuition fees are now available to pay on School Hub.

Not all lessons will begin the first week back.

Piano, keyboard and guitar lessons will begin w/c Monday 15th April and the missed lesson will be made up during the half term.



Percussion lessons will begin w/c Monday 22nd April, there will only be four percussion lessons this half term and pupils will be billed accordingly.



Orian Design a Book Cover Competition

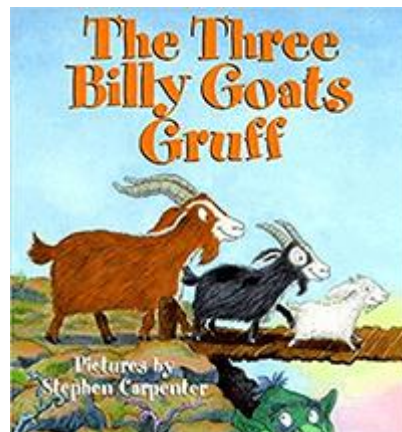
The school kitchen team has asked if the children in school would take part in a 'design a book cover' competition.

The book cover they design could be for a book already in print or a fictional title of their own choice.

Please return all entries to school by Monday 25th March to allow the kitchen staff enough time to judge the entries.

The lucky winner of the competition will be notified before we break up for the Easter holidays and presented with a £5.00 Amazon voucher.

Good Luck!



Upcoming Sports Fixtures

There will be a number of Sports Competitions taking place over the next academic year. If your child is chosen to take part in one of these competitions you will be notified.

The events will take place during the school day and transport will be provided by school.

Thursday 16th May — Year 5 and 6 Rounders

Thursday 13th June — Year 5 and 6 'Kwick' Cricket

Thursday 27th June — Year 2 and 3 Football



Dates For Your Dairy

Tuesday 9th April — School Re-opens for the Summer Term

W/C Monday 13th May — Year 6 SATs Week

Monday 20th May — Reception New Intake Meeting 6.30pm

Thursday 23rd + Friday 24th May — Pegasus Working with Year 6

Friday 24th May — Break Up for Half Term at 3.15pm



School Trips

Class trips in the summer term are as follows:

Reception - Martin Mere - 23 June

Year 1 - Imagine That! - 27 June

Year 2 - Blue Planet Aquarium - 23 April

Year 3 - Chester - 19 June

Year 4 - Liverpool World Museum - 10 July

Year 5 - Child Safety Media - 24 April

Year 6 - Liverpool Cathedral - 12 June



Your generous and valuable contributions are essential in enabling us to arrange the class trips and we are very grateful for your support. Unfortunately, school no longer has the funds to subsidise trips, which means that if we do not receive enough contributions towards the cost of your child's class trip we may have no option but to cancel it. We are requesting that all contributions are paid a month in advance of the trips taking place so that we can pay both the venue and coach company, this is why we have provided advance notice of the trips.

This year we have given parents and carers the option of contributing towards the cost of their child's school trip in one full contribution or weekly/monthly installments towards the total cost. Both options are available on School Hub. Please can we ask that, if you have not already done so, you make your contribution within a month of the trip taking place.

Please contact the School Office in the strictest confidence, if you are experiencing difficulty in contributing towards the trips to discuss payment options. Thank you.

Thank you for your continued understanding and support.

