



# ST. LUKE'S CHURCH OF ENGLAND PRIMARY SCHOOL

Friday 4/10/2019

## Weekly Diary w/c 7/10/2019

**Sunday— Harvest Festival 10am in St Luke's Church.**

**Monday — Cello/Woodwind/Percussion/Voice Lessons. Prospective Parents Visit 1.30pm. Reception Reading Meeting 6pm in School. Friends of St Luke's Meeting 7pm in School.**

**Tuesday — Piano/Keyboard/Guitar Lessons.**

**Wednesday — Judo Club 8am. Piano/Keyboard Lessons. Year 3 and 6 Swimming. Junior Hockey Club.**

**Thursday — Violin Lessons.**

**Friday — Brass Lessons. Film Night.**



## Harvest Festival

Harvest Festival will take place in St Luke's Church at 10am on Sunday morning. Church has been decorated with all the generous harvest gifts that were sent into school on Tuesday.



Harvest donations will be sent to The Brick in Wigan following the service. The Brick is a charity that supports people who face difficulties including poverty and homelessness.



## Aldi Sports Stickers

We are collecting Aldi Sports Stickers in school.

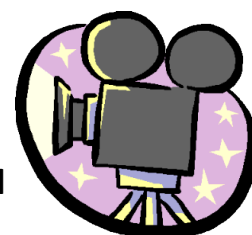


## Film Night

Movie Night fliers have been sent out today with all the children.

Movie night will take place on Friday after school and will cost £5.00 per child.

If you would like your child to attend please complete the flier and return to school asap with your payment.



### Sport Report



Good luck to the football team who will play against Gilded Hollins at Golborne High School on Thursday 10th October after school.

Well done to the hockey team who played extremely well in the tournament at Leigh Sports Village yesterday.

### Flu Vaccinations

It is of utmost importance that you return your child's Flu Vaccination form to indicate whether or not you want your child to take part in the vaccination programme.



### Safeguarding

If your child rides a bike to school it is imperative that they wear a cycle helmet in the interest of personal safety.



Could we also request that children wear something reflective on their clothing whilst riding their bikes as the daylight hours grow shorter.

Thank you.

### Coffee Morning

There will be a coffee morning in school on Wednesday 16th October at 9am (prior to the Year 4 class worship).

At the coffee morning 'Altogether Kids CIC, the parent — child connection, will look at ways to introduce mindfulness tools into your home and daily life.

Everyone is welcome to join us regardless of whether they wish to stay for the Year 4 class worship at 10am.



### Wanted

Please contact the school office if you are able to spare an hour or two to read with the children.



## Dates for your Diary

**Sunday 6th October— Harvest Festival in Church**

**Monday 7th October— Prospective Parents' Visit 1.30pm**

**Monday 7th October— Reception Reading Meeting 6.00pm in School**

**Monday 7th October— Friends of St Luke's Meeting 7pm in School**

**Friday 11th October— Film Night**

**Monday 14th October— Year 2 SATs Meeting 6.00pm in School**

**Monday 14th October — Year 1 Phonics Meeting 6.15pm in School**

**Tuesday 15th October— Parents' Afternoon/Evening**

**Wednesday 16th October— Parents' Mindfulness Coffee Morning  
9.00am**

**Wednesday 16th October— Year 4 Class Assembly 10.00am**

**Wednesday 16th October— Manchester Fire Service working with Year 6**

**Friday 18th October— Non Uniform for St Luke's Day Donations for  
Church**

**Friday 18th October— School Closes for Half Term 3.15pm**

**Monday 28th October— School Re opens**

**Wednesday 30th October— Prospective Parents' Visit 1.30pm**

**Friday 1st November— Non Uniform Day (please bring one good as new  
toy for the toy stall at St Luke's Church Autumn Fayre)**

**Saturday 2nd November— Autumn Fayre in St Luke's Church 10am—4pm**

**Monday 4th November— UK Parliament Week in School**

**Monday 4th November— Prospective Parents' Visit 1.30pm**

**Monday 11th November— Anti Bullying Week**

**Wednesday 13th November— Prospective Parents' Visit 1.30pm**

**Thursday 14th November— Flu Vaccinations**

**Friday 15th November— Children in Need**

**Sunday 24th November— Praise Service in Church**

## Dates for your Diary Continued

**Monday 9th December— Infant Nativity 2pm and 6.30pm in School**

**Tuesday 10th December— Junior Carol Service 2pm in School and 6.30pm in Church**

**Thursday 12th December— Christmas Dinner**

**Friday 13th December— Infant Christmas Party**

**Monday 16th December— Year 3+4 Christmas Party**

**Tuesday 17th December— Christmas Worship 2.15pm**

**Wednesday 18th December—Year 5+6 Christmas Party**

**Thursday 19th December—St Luke's Has Got Talent**

**Thursday 19th December— End of Term 3.15pm**

**Tuesday 7th January— Return to School**



## Class Worship

**Wednesday 16th October— Year 4**

**Wednesday 6th November— Year 6**

**Wednesday 13th November— Year 2**

**Wednesday 20th November— Year 1**

**Wednesday 27th November— Year 3**

**Wednesday 4th December— Year 5**



**All parents, grandparents and carers are welcome to join us at 10am in the school hall for class worship. Tea and coffee will be served from 9am in school prior to the start of worship.**