



ST. LUKE'S CHURCH OF ENGLAND PRIMARY SCHOOL

Friday 1st February 2019

Weekly Diary w/c 4/02/2019

Monday — Woodwind/Drum/Voice Lessons. NSPCC Assemblies and Workshops in School. Year 6 Residential Meeting 6.30pm in School.

Tuesday — Guitar/Piano Lessons. Year 5+6 Football Club.

Wednesday— Keyboard Lessons. Year 3 Swimming. Junior Rugby Club. Junior Netball Club. Mad Science Club.

Thursday — Multi Sports Club. Choir Club.

Friday — Brass Lessons. Film Night.



Christingle



Thank you to all the children and parents who attended the Christingle service on Sunday morning and for all the donations that were sent in for the Children's Society.

Thank you to all our families for your understanding on Wednesday when school could not open because of adverse weather conditions.

Unfortunately along with a lot of our families who experienced difficulty in getting to school, a number of our teaching and support staff were also unable to get to school safely. Therefore in the interest of everybody's safety a decision was made to close the school for the day.



Once again we would like to thank you for your continued support and understanding.

Missed Clubs



Please note that an extra Multi Skills Club session will take place on Thursday 28th February and an extra Mad Science Club session will take place on Wednesday 27th March to make up for the sessions missed this week.



St Luke's Church Saturday Club

From Saturday 2nd March St Luke's Church will be running a Saturday Club for young people aged between 5—11 years.

The club will run weekly and start at 10.30am and finish at 11.30am.

Parents are welcome to come along to find out about the club.



Safeguarding

If your child is poorly with sickness or diarrhoea, please note that they must remain off school for 48 hours after the last episode. This is in accordance with the Health Protection Agency guidelines.

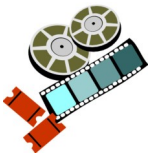
A phone call to school on the first day your child is off and a letter explaining their absence on their return to school are required.



Film Night

Film Night will be held on Friday 8th February after school.

If your child would like to attend please complete the slip on the bottom of the Film Night flyer and return to school with a £4.00 payment.



Thank you.

Sport Report

Well done to all the children who took part in the Sports Hall Athletics at Lowton High School this week.

St Luke's came 6th out of all the Wigan Schools.



Music Fees

Music fees for the next half term are now available to pay on Lunch Shop.

Could we please ask that all outstanding debts for this term are settled.

Next terms music fees are now available to pay on Lunch Shop.

Thank you.



Volunteers

Please contact the school office or any member of The Friends of St Luke's if you are able to help out at the Film Night on Friday 8th February, or with the Mothers' Day sale which will take place every lunchtime w/c Monday 25th March.



Coats

Could we please ask that children bring coats, hats and gloves into school during cold weather.

Please make sure that your children's clothing is clearly labelled.



Water Bottles

Water bottles must be clear and made of plastic and be clearly labelled with your child's name.

New water bottles are available from school at a price of £2.50 each.



Class Worship

Class Worship takes place on Wednesday mornings at 10am in the school hall. Parents and grandparents are welcome to attend and tea and coffee will be served in school from 9am for anyone wanting to wait in school after dropping their children off at school.



February 13th — Year 4

February 27th — Year 3

March 6th — Year 2

March 13th — Year 1

March 20th — Year 6

March 27th — Reception

April 3rd — Year 5



Dates For Your Diary

Monday 4th February — Year 6 Residential Meeting 6.30pm in School

Wednesday 6th February — NSPCC Assemblies and Workshops in School

Friday 8th February — Film Night

Monday 11th February — Year 5+6 'Alice Experience'

Monday 11th February — Invitation to Parents to View Pupil Work 3.15pm

Friday 15th February — End of Term 3.15pm

Monday 25th February — Return to School

Monday 4th March — Friends of St Luke's

Thursday 7th March — World Book Day

W/C Monday 4th March — Year 5 Bikeability

Wednesday 13th — Friday 15th March — Year 6 Residential

Friday 15th March — Red Nose Day

Monday 18th March — Let's Sing

Sunday 24th March — Praise Service at St Luke's Church (starring Year 3)

Monday 25th — Friday 29th March — Mother's Day Sale at lunch time

Tuesday 26th March — Parents' Afternoon/Evening

Wednesday 3rd April — Easter Bingo

Thursday 4th April — Easter Worship 2.15pm

Friday 5th April — End of Term 3.15pm

