



ST. LUKE'S CHURCH OF ENGLAND PRIMARY SCHOOL

Friday 16th July 2021

Week Commencing Monday 19/07/2021

Monday — Woodwind Lessons.

Tuesday— Guitar Lessons. There will be no Piano/Keyboard lessons as double lessons took place last week.

Wednesday— Violin Lessons.

Thursday— Normal School Day.

**Friday— No Brass lessons as double lessons took place last week.
School Closes for the Summer.**



We have all enjoyed a lovely week at school. Year 6 put on a wonderful production of 'A Funny Thing Happened on the Way to Camelot' which their parents watched socially distanced on the school field. Year 2— 6 class bubbles also watched the production on the field this week and lots of laughter was heard. We are hoping that Reception and Year 1 will be able to see the production during next week.

Our Annual Awards Ceremony took place on the field on Thursday morning. Well done to all the children who won certificates and trophies.

We are very proud of all of our children and of what they have achieved during this school year.

Thank you to all of our families for your continued support during these unprecedented times.



Bikes and Scooters



Please could we remind all parents and carers that neither children or adults are allowed to ride on bikes or scooters on the school grounds. This decision has been made for health and safety reasons and we appreciate your co-operation.



Safeguarding



Until the end of term St Luke's must continue to follow the Government's School Covid-19 Operational Guidance. This information can be found in the letter sent out this week on Wednesday 14th July.

We would like to thank all of our families for their continued support in maintaining social distancing and wearing face coverings whilst dropping off and picking up children from school.

Your support ensures that we have a safe and smooth drop off and pick up each day.



Parent Information

Please follow this link for Covid-19 Guides, Information and Risk Assessments <http://www.saintlukes.wigan.sch.uk/page/covid--19-school-re-opening/72822>



Playground Equipment



In the interest of the safety of your children, please could we remind all parents and carers that children should not play on the outdoor equipment before or after school. The equipment should only be used when supervised by a member of school staff. Thank you

Save a Baby or Child's Life

Westleigh Start Well Centre will be offering free two hour workshops on how to save a baby or child's life during September. The workshops will take place in the Leigh, Lowton and Golborne area.

Please call 01942 777705 for more information or to book a place.

School Track Suits



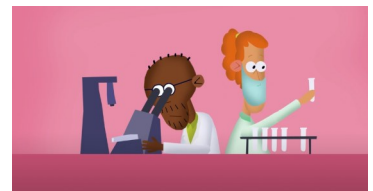
Navy blue tracksuits with the school badge embroidered on the jacket are now available from our uniform suppliers — Rainbow Uniform (formerly Bang Bang) and Jaymax in Leigh and Impressions in Golborne. If you are replacing your child's tracksuit please would you consider purchasing our official school tracksuit.

Lateral Flow Tests

Thank you so much to all our parents who have administered Lateral Flow Tests to their children whilst they have been off school with any illness, or if a family member has had a positive test result. We completely understand that doing the test is optional and we thank you for your continued support which has meant that, so far, school has managed to remain open to all classes. Further information on the latest Government advice can be found at <https://www.gov.uk/coronavirus>

If your child shows any symptoms of Covid 19 please take them for a PCR test.

Thank you.



Neighbours



Could we please ask that parents and carers are mindful and courteous to our neighbours when dropping off and picking up from school.

Thank you