



ST. LUKE'S CHURCH OF ENGLAND PRIMARY SCHOOL

Friday 23rd December 2016

Weekly Diary w/c 9/01/2017

Monday — School Closed to Pupils.

Tuesday — Keyboard/Piano Lessons. Y5+6 Football Club 3.15— 4.15pm.

Wednesday — Guitar/Violin Lessons. Year 3 Swimming Lessons. Dance Club 3.15— 4.15pm.

Thursday — Brass Lessons. Y3+4 Bowling Club 3.15— 4.15pm.

Friday — Fencing Club 7.50am.



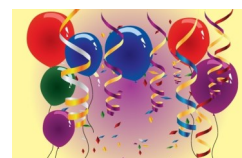
Music Fees



Music fees are now due for the next half term. Lessons cost £5.25 each (£3.75 for Year 5 pupils first instrument). There will be 4 lessons to pay for Voice and Drums (as there will be no lesson the last week of Christmas term) at a cost of £15.00, 5 lessons for Woodwind and Oboe at a cost of £26.25 (£18.75 for Year 5) and 6 lessons for all other instruments (missed lessons have been made up during the term) at a cost of £31.50 (£22.50 for Year 5 pupils first instrument).

Christmas Parties

Thank you to everyone who helped to make the Christmas parties so successful this year, the children all had a wonderful time.



Sports Report



Congratulations to all our sports men and women on achieving the Silver Sports Award, which will be presented to School on Monday 16th January.

Newsletter Christmas Competition

Well done to Dexter who won the Newsletter Competition. All the entries received had 100% correct answers.

The answers were ...

Week 1 Christmas Tree and Santa

Week 2 The Nativity and an Elf

Week 3 Shepherds and Wise Men



St Luke's Has Got Talent

We all had a fantastic time watching our extremely talented children this morning.
Well done to ...

Lewis, Lucy, Rhianna and Anna in third place
Sophie and Rae in second place

and

The KFC Kids in first place



Superstar Winners

Well done and congratulations to Lola, Talia, Finley, Bethan, Rhianna, Ben and William our superstar winners this term.



Payments to school

Could we please ask that all payments made to school are sent in through your child's classroom in order for them to be receipted. Where possible could we also ask that cheques are sent to avoid any confusion over whether payments have been made. If under exceptional circumstances money is paid at the school office a receipt will now be issued as school cannot take responsibility for unreceipted income. Thank you.



Gardening Club

After February half term we are planning to start a Gardening Club after school. If you would be able to help at this club please contact Mrs Richardson or the school office.



Guidance on Infection Control in School

Could we please remind parents that children must remain off school for 48 hours following their last episode of sickness or diarrhoea. For further guidance please visit the Public Health England Website and search for Infection Control in Schools.



Year 6 PGL Trip

Could we please remind all parents that it is imperative that the final balance for PGL is paid before Monday 16th January. Please contact the school office if you are experiencing any difficulty in paying this bill on time.
Thank you.



Parent View

Ofsted are always seeking the opinions of parents with regard to the schools their children attend.

If you would like to leave some comments about St Luke's School please visit

<https://parentview.ofsted.gov.uk/link>
-to-us



Mad Science Club



Everyone who applied for a place at the Mad Science Club has been allocated a place to start on Wednesday 18th January.

We would like to take this opportunity to thank everyone who has volunteered in school this term, your help and support is invaluable.

We would also like to wish everyone a very Merry Christmas and a Happy New Year and we look forward to seeing you back in school on Tuesday 10th January.



